

#### 4. Suggestion for maintenance

- Keep the place around in handpiece clean
- Remove dust on handpiece wiping with isopropyl alcohol and avoid wet inside.  
Do not apply the oil to the goods and do not clean with water. The grease inside of the bearing could melt away due to the oil.
- Air cleaning is acceptable but air pressure may affect the handpiece or motor

#### ⚠ Warranty

- 1 year
- warranty does not include misuse or normal wear of consumable parts.

#### ⚠ Warning for battery

- The battery used in the control unit is a Nickel-Hydrogen type, and recycled.
- In case of contact the liquid to clothing or body skin or eyes, wash immediately.
  - in case of shortening the operating time or the speed becomes slower, it may means the replacement of the battery.
  - Follow the government or local law for battery disposal.

-The battery used in the control unit is a Nickel-Hydrogen type, and is a wearable component. The battery life is limited. Battery capacity decreases little by little as you use it more and more, and as time passes. Its life varies depending on storage, operating conditions, and environment. When not in use for a prolonged period, the battery might deteriorate. Under normal use of the unit and battery charged once a day, it should last 1 year. When the battery operating time seems to have been considerably shortened, a probable cause is that the battery has reached the end of its life. For replace it, send to the dealer.



**RAM PRODUCTS, INC.®**

5 Elkins Road East Brunswick, N.J. 08816

www.ramprodinc.com ☎ 1-877-RAM-PROD / 1-732-651-5500

# MYSTISA POCKET DRILL



## INSTRUCTION MANUAL

Ram Products, Inc.  
5 Elkins Road  
East Brunswick, N.J. 08816  
Monday thru Friday 8:30 – 6:30 EST

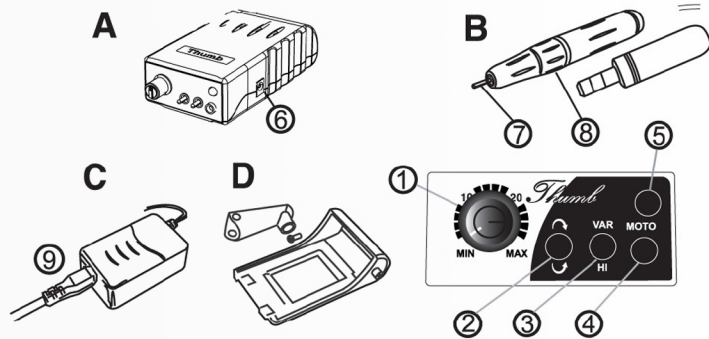
Phone: 1-877-RAM-PROD / 1-732-651-5500  
Fax: 1-732-651-6688  
or e-mail us at ramprodinc@ramprodinc.com

## 1. Features

- \* 30,000 RPM
- \* Rechargeable
- \* Up to 8-hour battery life
- \* 5-hour battery full charge
- \* Variable speed control
- \* Light weight handpiece
- \* Chuck Locking
- \* Easy bit change
- \* Uses standard 2.35mm (3/32") bits
- \* High torque
- \* Quiet operation
- \* No vibration

Read all instructions before operating.  
Keep this user's manual for future reference.

## 2. Product Components & Part Name



- A. Controller  
B. Handpiece / E-type motor  
C. Adaptor  
D. controller bag (holder) - Optional

- 1) Speed Control Knob  
2) Forward / Reverse Selector  
3) VAR / HI Selector  
4) Handpiece Connector  
5) On / Charge lamp  
6) Battery Charger Connector  
7) Bit  
8) Collet Chuck Handle (bit open & lock)  
9) Power cord

## 3. Setting & Operation

- (1) Charging the battery (Approx. 5 hours to full charge)
- Connect the adaptor DC plug in Power Connector on the side of the controller.
  - Connect the AC power adaptor to outlet (wall socket).
  - When the lamp changes red to green, the charge is completed.
  - Disconnect AC Adaptor from Controller after charging is completed. ( Lamp color : Red --> Green )

**!** ( The battery could overheat in this case )

- While operating the handpiece, the battery can be charged connecting the power cord.

### (2) Operating of Handpiece

- Connect Handpiece Cord to the jack marked as "MOTOR" (DC Motor Connector) in the front of the controller.
- Turn the Speed Control Knob to start the handpiece. Turn it until click sound to power off and to stop the handpiece.
- Turn the Forward/Reverse Selector to "FWD" to run the motor in the forward direction, or to "REV" to run it in the Reverse direction.
- Handpiece Motor speed can be varied between 0 and 30,000 rpm by the Speed Control Knob

### (3) Insertion and removal of bits

Turn the handle in the counter-clock direction until the click sound to open the chuck.  
The chuck is opened and the bit is removed.  
Turn the handle in clock direction until the end and the chuck is closed and the bit is locked.

**!** Caution

- Do not work in a dangerous place. Do not use the product in humid places
- Transport and storage conditions :  
Temperature : -20 ~ 60°C  
Humidity : 0 ~ 90% RH  
Atmospheric Pressure : 500hPa to 1060hPa
- Use the bit conforming to ISO standards
- Be careful not to drop the handpiece as it may be damaged or broken. In case that it is dropped, check if the bit is bent or if any excessive heat is generated operating slowly and carefully.
- Do not turn on the power of controller while the collet of handpiece open. short circuit of the handpiece may be caused
- Make sure that the power is off before putting the power plug in the socket in order to avoid an expected injury due to sudden start.
- Keep the handpiece with bits mounted.
- Do not put handpiece down before it stops completely
- Be sure to pull out the power cord before moving the control box.
- Use the specified voltage
- Use accessories suitable for this product
- Keep the workplace clean. Debris may cause an accident